



Mississippi **INBRE**
Community Engagement & Training Core

Cycle 2 Awards Announcement
October 22, 2021 12:00N

1

Presentation Overview

- Community Engagement & Training Core (CETC)
- Intensive Behavior Therapy for Obesity Clinical Trial
- CETC Awards
- Question & Answer Session

2



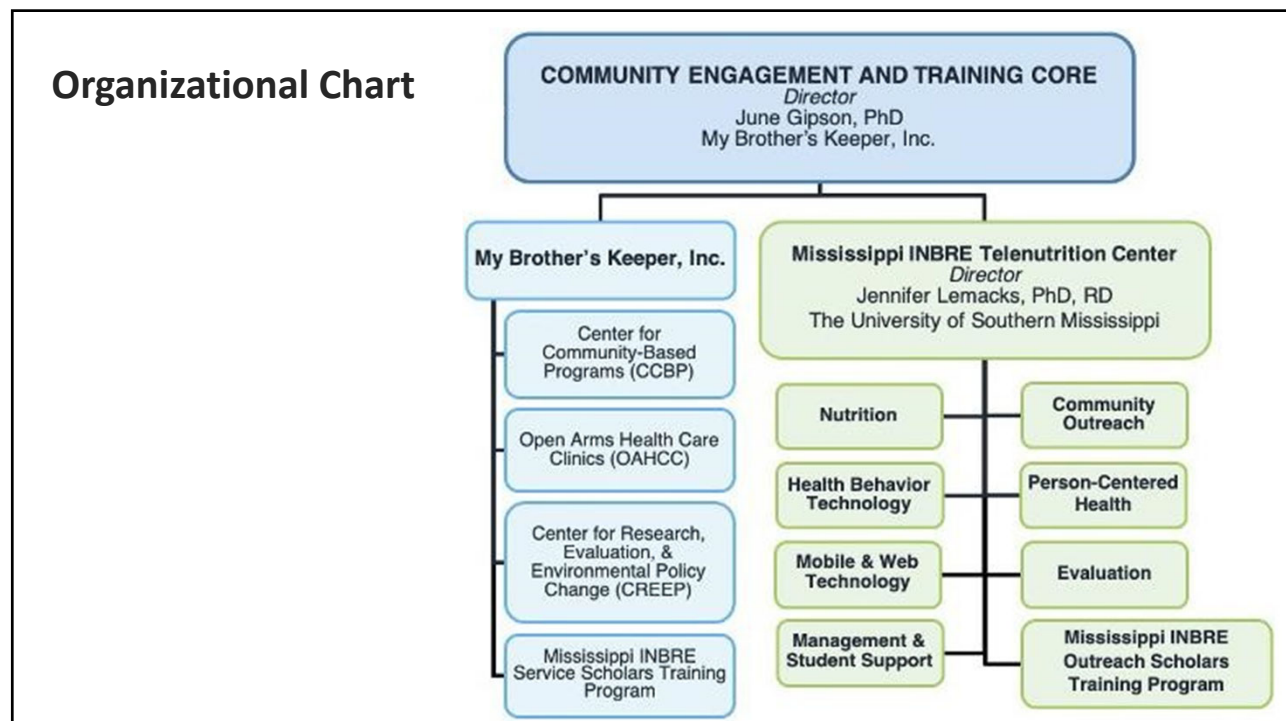
Community Engagement and Training Core (CETC)

AIMS

Aim 1: Provide training and mentorship opportunities for students that emphasize an interdisciplinary approach to solving public health issues.

Aim 2: Provide research opportunities for faculty and students to engage in telehealth, community-based participatory and/or translational research.

3

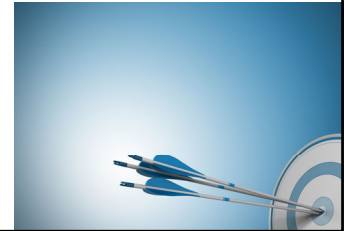


4

Intensive Behavior Therapy for Obesity Project GOAL

Assess the **implementation of an evidence-based, intensive behavioral therapy program in real world settings** with technology supplementation to address obesity and related chronic disease among young to middle-aged adults using an adapted and comprehensive implementation fidelity model.

Clinical Trial models Centers for Medicare and Medicaid Services IBT for obesity benefit.



5



MOVE & EAT 2 LIVE

IBT for Obesity Intervention

- Person-centered nutrition and physical activity program
- Main Hub Site: OAH Community Health Solutions in Hattiesburg, MS
- Virtual sessions delivered via Bridge2U web and mobile application

Full Scale Intervention Participant Contact Schedule

Contact Schedule	Month(s)
Enrollment	0
Weekly	1
Bimonthly	2 – 6
Monthly	7 – 12

Assessment @ 0, 6, 12 months

6

Second Call for CETC Awards Now Open!



Outreach Award
\$3,000



Hub Site Award
\$9,000



Research Hub Site
Award
\$15,000

- ✓ Awardees join the CETC Team!
- ✓ Conduct community outreach.
- ✓ Receive an outreach kit.

7

Outreach Kit



8



Outreach Award
\$3,000

Support community engagement activities to promote health and program recruitment.

- Award support for travel, and other outreach expenses.

Student Roles

- Health promotion outreach and recruitment

Major Responsibilities:

- To identify community venues (ie., health fairs, store fronts, church, clinic lobbies, etc.)
- Recruit students, monitor student activities
- Support 18 outreach events per year (or approximately 6 events per semester depending on when awarded)

Note: Must be near an existing data collection site (Jackson, Gulfport, Starkville, or Hattiesburg)

9



Hub Site Award
\$9,000

Outreach Award + serves as a data collection site for the Move & Eat 2 Live program.

- Award support for travel, outreach expenses and required equipment.

Student Roles

- Health promotion outreach and recruitment
- Participant management and data collection

Added Major Responsibilities:

- Maintain appointment scheduling for participant data collection events.

Required equipment:

- Tanita MC-780U (\$6000)
- Stadiometer (\$200)
- Girth Circumference tapes (\$60)

10



Research Hub Site
Award
\$15,000

Outreach + Hub Site Awards + research dissemination.

- Award support for travel, outreach expenses, required equipment and research dissemination costs.

Student Roles

- Health promotion outreach and recruitment
- Participant management and data collection
- Research projects
- Health Coach role

Added Major Responsibilities:

- Publish one manuscript
- Support student research poster and oral presentations.

Required equipment:

- Tanita MC-780U (\$6000)
- Stadiometer (\$200)
- Girth Circumference tapes (\$60)

11

What do we provide for Awardees? Everything! 😊

- Pre-award support to facilitate communication with upper administration
- Post-award support for budget development
- Human subjects training (if not available at your institution)
- PI intervention training
- Student training for various roles
- A team of researchers and staff to support activities
- Ongoing technical assistance

12




**MISSISSIPPI HEALTH DISPARITIES
CONFERENCE 2022**

SAVE THE DATE

September 8-9, 2022

Mississippi Coast Convention Center
Biloxi, Mississippi

mississippihealthdisparities.org

MHD2022 is open to all individuals & organizations that are committed
to addressing health disparities in Mississippi.

mhd2022

13

How to apply?

- <https://msinbre.org/cetc-awards-proposal/>
- BRIEF award application includes:
 - Institutional and PI information
 - Brief plan descriptions for:
 - Community Outreach
 - Student Engagement
 - Research (for Research Hub Site Awards only)

APPLICATIONS DUE EOB NOVEMBER 19, 2021

14

Question and Answer Session



Community Health Solutions